



REGIONAL SPECIALISED METEOROLOGICAL CENTRE-TROPICAL CYCLONES, NEW DELHI
TROPICAL WEATHER OUTLOOK

DEMS-RSMC TROPICAL CYCLONES NEW DELHI DATED 15.05.2025

TROPICAL WEATHER OUTLOOK FOR THE NORTH INDIAN OCEAN (THE BAY OF BENGAL AND THE ARABIAN SEA) VALID FOR THE NEXT 168 HOURS ISSUED AT 0730 UTC OF 15.05.2025 BASED ON 0300 UTC OF 15.05.2025.

BAY OF BENGAL:

Yesterday's upper air cyclonic circulation over Andaman Sea lay over southeast Bay of Bengal between 3.1 km & 5.8 km above mean sea level tilting southwestwards with height at 0300 UTC of today, 15th May, 2025.

Yesterdays' upper air cyclonic circulation over southwest Bay of Bengal adjoining Tamil Nadu coast lay over north Coastal Tamil Nadu and neighbourhood at 1.5 km above mean sea level at 0300 UTC of today, 15th May, 2025.

Scattered to broken low and medium clouds with embedded intense convection lay over eastcentral & south Bay of Bengal, Andaman Sea, Gulf of Martaban & Tenasserim coast. Scattered low and medium clouds with embedded isolated weak to moderate convection lay over westcentral Bay of Bengal.

***PROBABILITY OF CYCLOGENESIS (FORMATION OF DEPRESSION) DURING NEXT 168 HRS:**

24 HOURS	24-48 HOURS	48-72 HOURS	72-96 HOURS	96-120 HOURS	120-144 HOURS	144-168 HOURS
NIL	NIL	NIL	NIL	NIL	NIL	NIL

***NOTE: EVERY 24HR FORECAST IS VALID UPTO 0300 UTC (0830 IST) OF NEXT DAY**

ARABIAN SEA:

Scattered low and medium clouds with embedded moderate to intense convection lay over eastcentral & south Arabian Sea, Lakshadweep Islands area, Maldives & Comorin area.

***PROBABILITY OF CYCLOGENESIS (FORMATION OF DEPRESSION) DURING NEXT 168 HRS:**

24 HOURS	24-48 HOURS	48-72 HOURS	72-96 HOURS	96-120 HOURS	120-144 HOURS	144-168 HOURS
NIL	NIL	NIL	NIL	NIL	NIL	NIL

***NOTE: EVERY 24HR FORECAST IS VALID UPTO 0300 UTC (0830 IST) OF NEXT DAY**

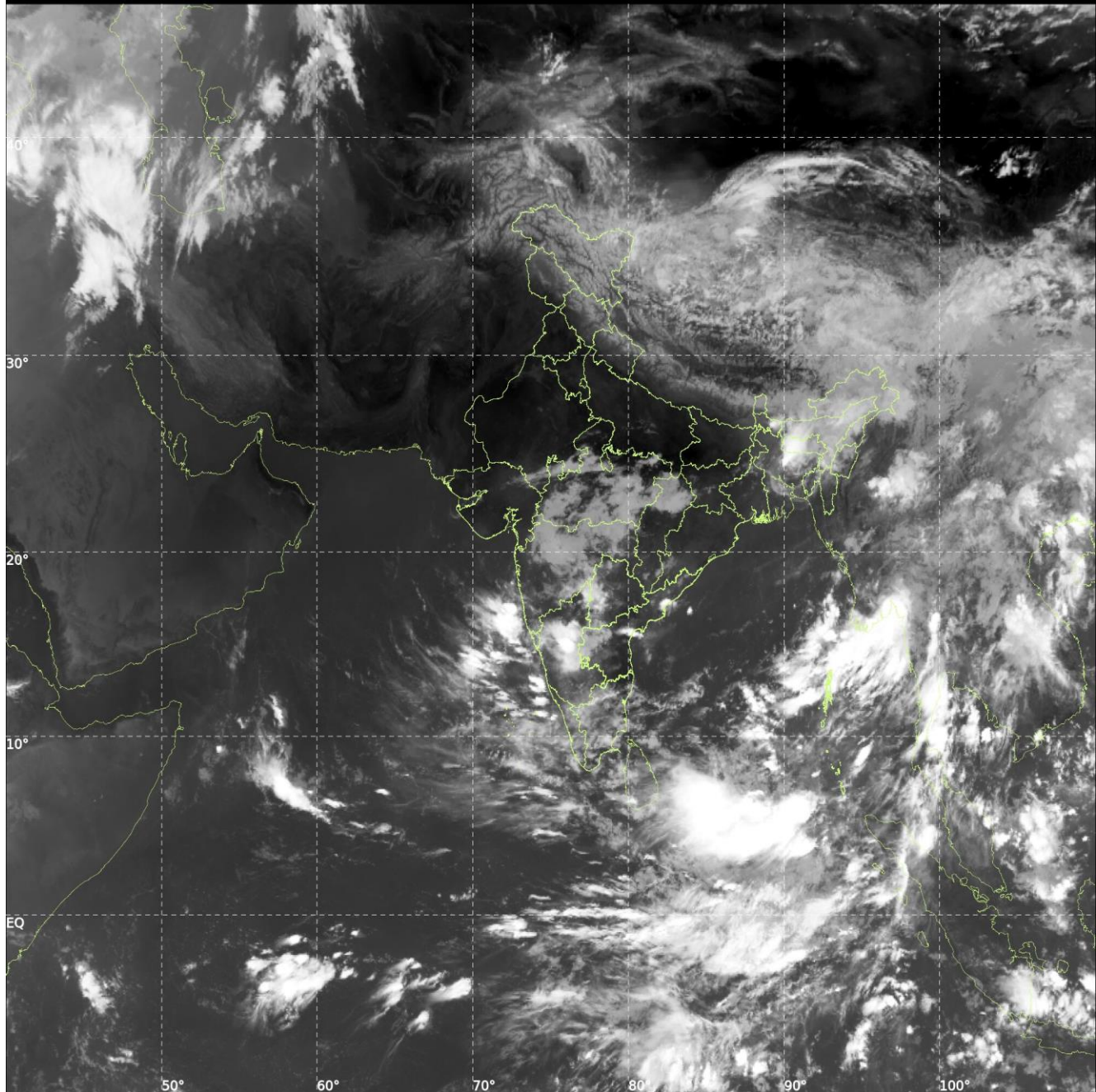
REMARKS: NIL



INSAT-3DS IMG, Thermal Infrared1 Count @ 10.83 μm
GMT:15-05-2025/(0300-0327) IST:15-05-2025/(0830-0857)
L1C MERCATOR (LINEAR STRETCH: 1%)

389

902



Cloud distribution: (a) Isolated: <25%, Scattered:25-50%, Broken: 51-75%, Solid:>75%, Convection Intensity: (a) Weak: Cloud Top Temperature(CTT)>-25°C,(b)Moderate:CTT:-25°Cto-40°C,(c)Intense:CTT: -41°Cto -70°Cand(d)Very Intense::Less than -70°C
PROBABILITYOFCYCLOGENESIS(FORMATIONOFDEPRESSION):NIL:0%,LOW:1-33%,MODERATE:34-66%ANDHIGH:67-100%
ThisisaguidanceBulletinforWMO/ESCAPPanelMembercountries.VisitrespectiveNationalwebsitesforCountryspecificBulletins